


| MAP LABEL | AIDS TO NAVIGATION | PLANE COORDINATES | | LATITUDE | LONGITUDE |
|-----------|---------------------|-------------------|-----------|--------------|--------------|
| | | X | Y | | |
| R60° | LT. BUOY-50 (12/20) | 482,029 | 2,208,372 | 30°24'04.39" | 81°36'58.89" |
| G61° | LT. BUOY-51 (12/20) | 460,806 | 2,205,007 | 30°23'50.80" | 81°37'10.76" |



NOTES:
 1. REFER TO SURVEY NO. 21-102.
 2. SEE SHEET NO. 1 FOR SURVEY NOTES.



US Army Corps of Engineers
 Jacksonville District
 SAFETY ON THIS JOB
 DEPENDS ON YOU

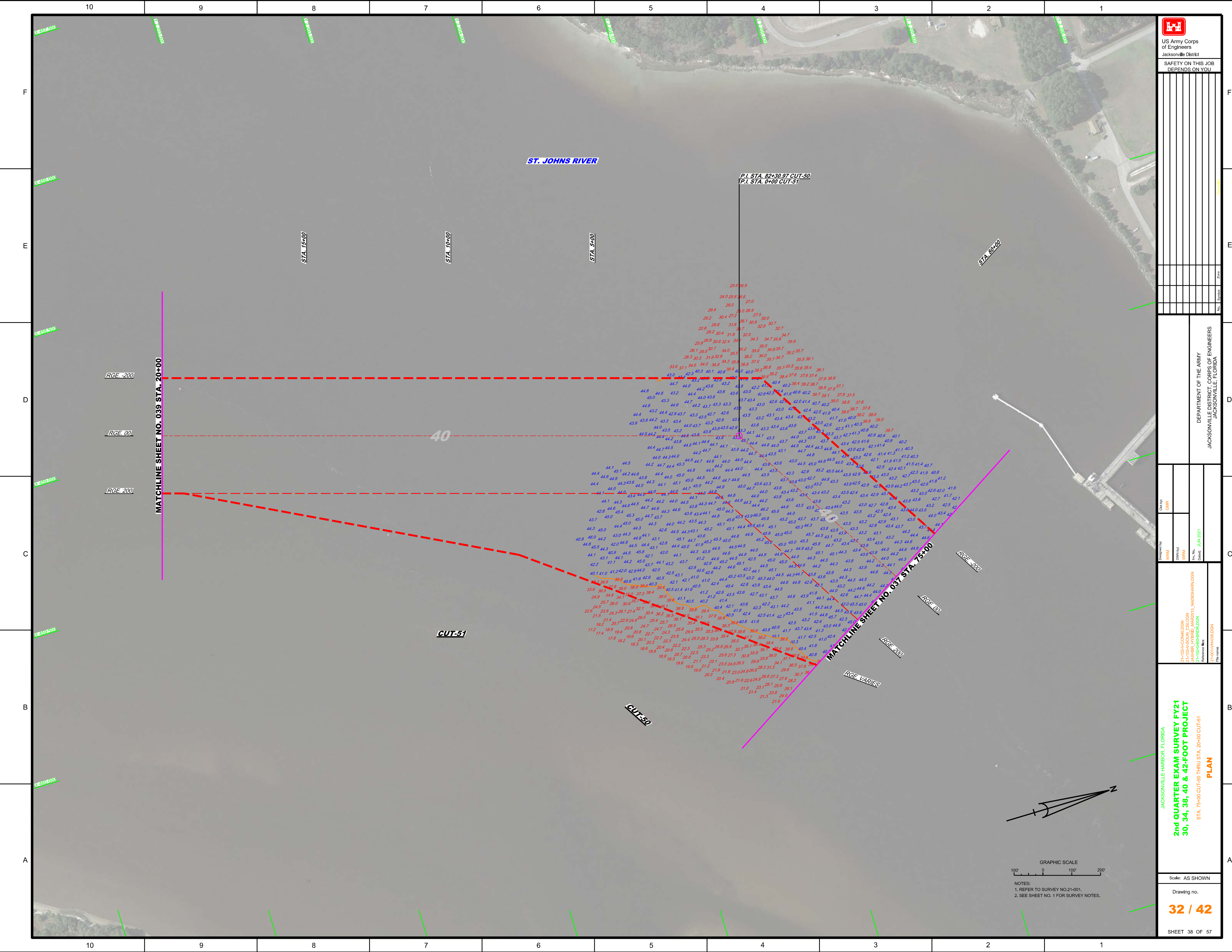
DEPARTMENT OF THE ARMY
 JACKSONVILLE DISTRICT, CORPS OF ENGINEERS
 JACKSONVILLE, FLORIDA

Designed by: **WRM**
 Drawn by: **WRM**
 Checked by: **WRM**
 Date: **JUN 2021**

XXXXXXXXXXXXXXXXXXXX
 21-102-A-HAN/DGN
 21-102-A-COM/DGN
 21-102-A-CON/DGN
 21-102-A-GR/DGN
 21-102-A-IBR/DGN
 21-102-A-IBR/DGN
 21-102-A-IBR/DGN
 21-102-A-IBR/DGN

JACKSONVILLE HARBOR, FLORIDA
2nd QUARTER EXAM SURVEY FY21
30, 34, 38, 40 & 42-FOOT PROJECT
 STA. 45+00 THRU STA. 75+00 CUT-50
PLAN

Scale: AS SHOWN
 Drawing no.
31 / 42
 SHEET 37 OF 57

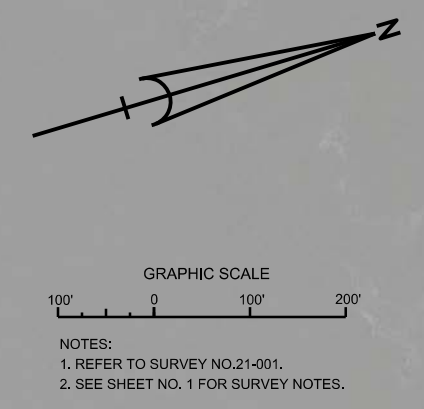


US Army Corps of Engineers
 Jacksonville District
 SAFETY ON THIS JOB
 DEPENDS ON YOU

DEPARTMENT OF THE ARMY
 JACKSONVILLE DISTRICT, CORPS OF ENGINEERS
 JACKSONVILLE, FLORIDA

Designed by: WRM, JRM, MDM
 Check by: GHR
 Project No: 24-102-CA-C0610-001
 Drawing No: 32-102-CA-C0610-001
 Issue Date: JUN 2021

JACKSONVILLE HARBOR, FLORIDA
2nd QUARTER EXAM SURVEY FY21
30, 34, 38, 40 & 42-FOOT PROJECT
 STA. 75+00 CUT-50 THRU STA. 20+00 CUT-51
PLAN
 Scale: AS SHOWN
 Drawing no.
32 / 42
 SHEET 38 OF 57



PI. STA. 82+30.97 CUT-50
 P.I. STA. 0+00 CUT-51

40

CUT-51

CUT-50

MATCHLINE SHEET NO. 037 STA. 75+00
 RGE. 200
 RGE. 00
 RGE. 200
 RGE. VARIES

MATCHLINE SHEET NO. 039 STA. 20+00

RGE. -200
 RGE. 00
 RGE. 200

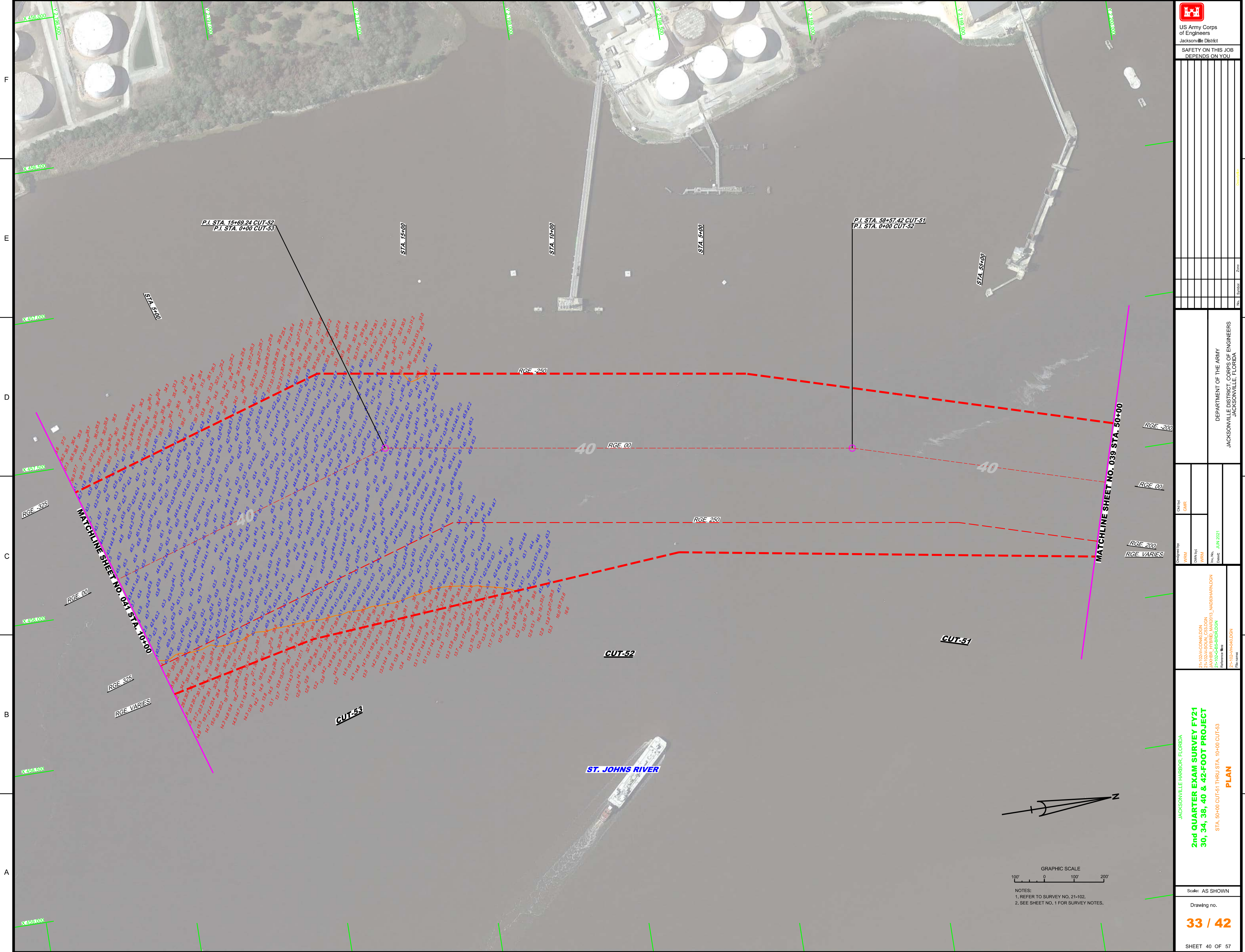
STA. 15+00

STA. 10+00

STA. 5+00

STA. 90+00

ST. JOHNS RIVER



P.I. STA. 15+69.24 CUT-52
P.I. STA. 0+00 CUT-53

P.I. STA. 58+57.42 CUT-51
P.I. STA. 0+00 CUT-52

40 RGE 00

RGE 250

40 RGE 00

RGE 200

RGE 00

RGE 200
RGE VARIES

MATCHLINE SHEET NO. 039 STA. 50+00

RGE 325

RGE 00

RGE 325

RGE VARIES

MATCHLINE SHEET NO. 04 STA. 10+00

CUT-53

CUT-52

CUT-51

STA. 15+00

STA. 20+00

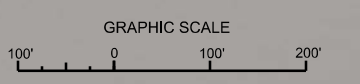
STA. 25+00

STA. 30+00

STA. 5+00

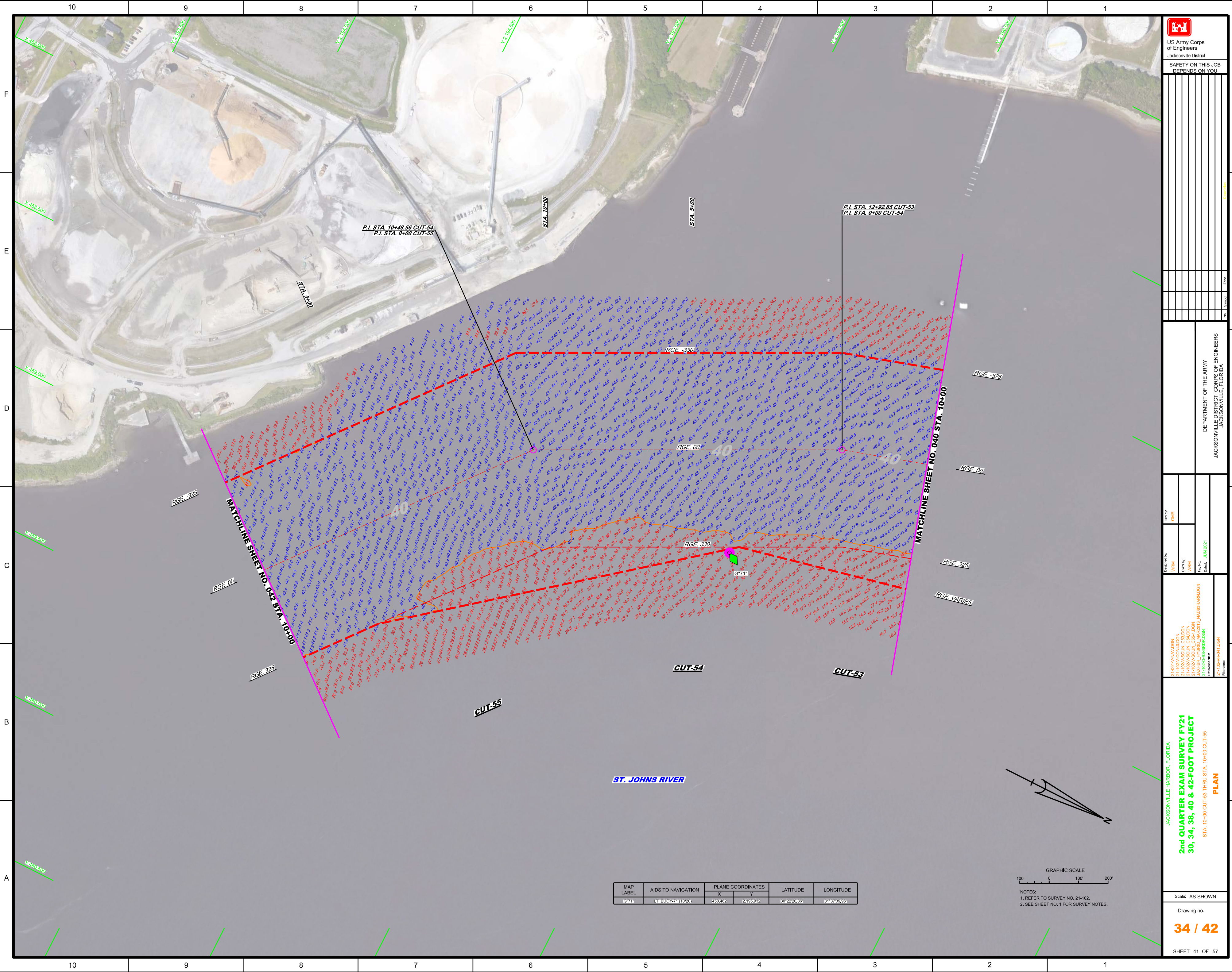
STA. 10+00


ST. JOHNS RIVER



NOTES:
1. REFER TO SURVEY NO. 21-102.
2. SEE SHEET NO. 1 FOR SURVEY NOTES.

| |
|---|
| US Army Corps of Engineers Jacksonville District SAFETY ON THIS JOB DEPENDS ON YOU |
| JACKSONVILLE HARBOR, FLORIDA 2nd QUARTER EXAM SURVEY FY21 30, 34, 38, 40 & 42-FOOT PROJECT STA. 50+00 CUT-51 THRU STA. 10+00 CUT-53 PLAN |
| 21-102A-COMMO.DWG 21-102A-CONSTR.DWG 21-102B-SS-BRIDG.DWG 21-102A-HARLDGN |
| Drawn by: WRM Check by: GHR Date: JUN 2021 |
| DEPARTMENT OF THE ARMY JACKSONVILLE DISTRICT, CORPS OF ENGINEERS JACKSONVILLE, FLORIDA Scale: AS SHOWN Drawing No. 33 / 42 SHEET 40 OF 57 |




 US Army Corps of Engineers
 Jacksonville District
 SAFETY ON THIS JOB
 DEPENDS ON YOU

DEPARTMENT OF THE ARMY
 JACKSONVILLE DISTRICT, CORPS OF ENGINEERS
 JACKSONVILLE, FLORIDA

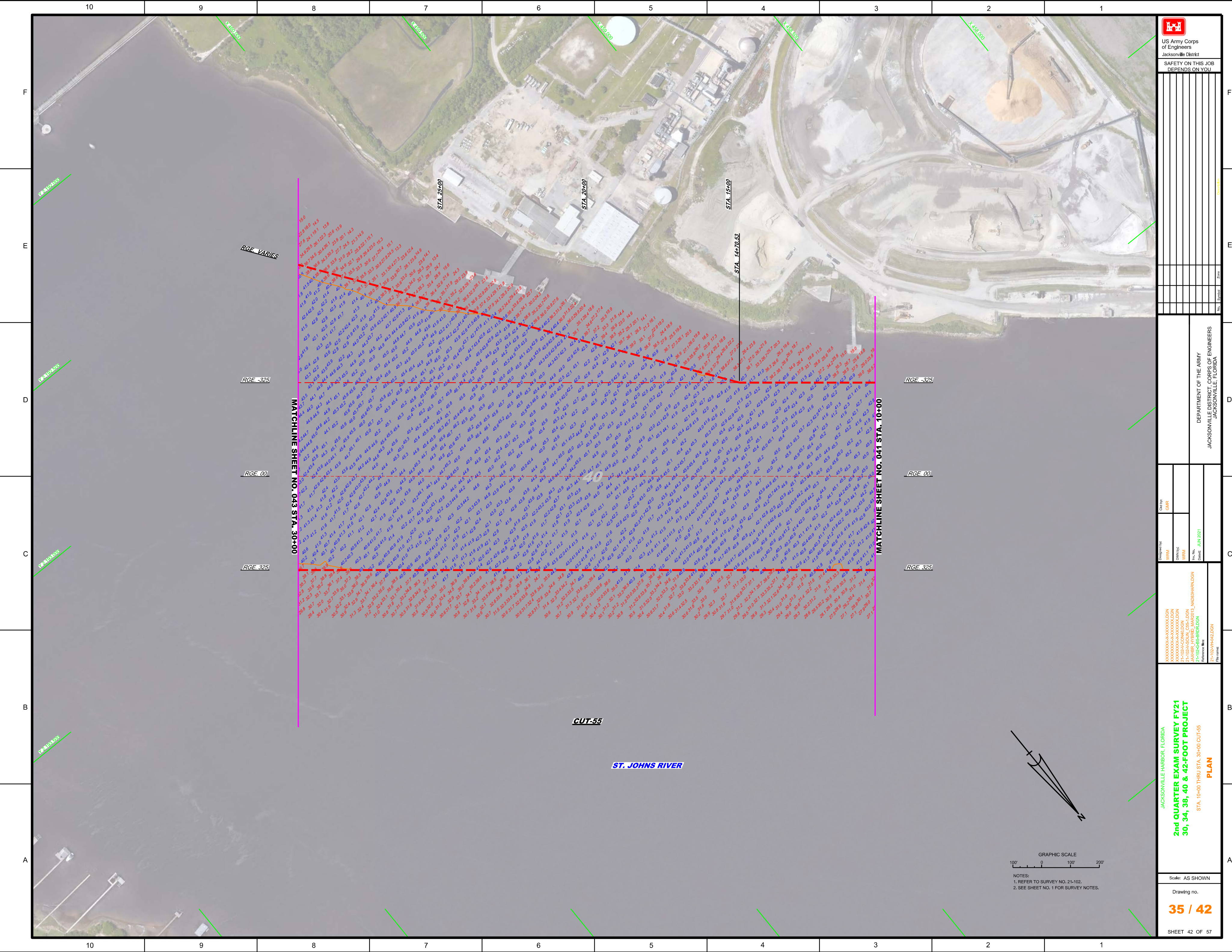
Drawn by: GHR
 Checked by: GHR
 Date: JUN 2021

2nd QUARTER EXAM SURVEY FY21
30, 34, 38, 40 & 42-FOOT PROJECT
 STA. 10+00 CUT-53 THRU STA. 10+00 CUT-55
PLAN

Scale: AS SHOWN
 Drawing no.
34 / 42
 SHEET 41 OF 57

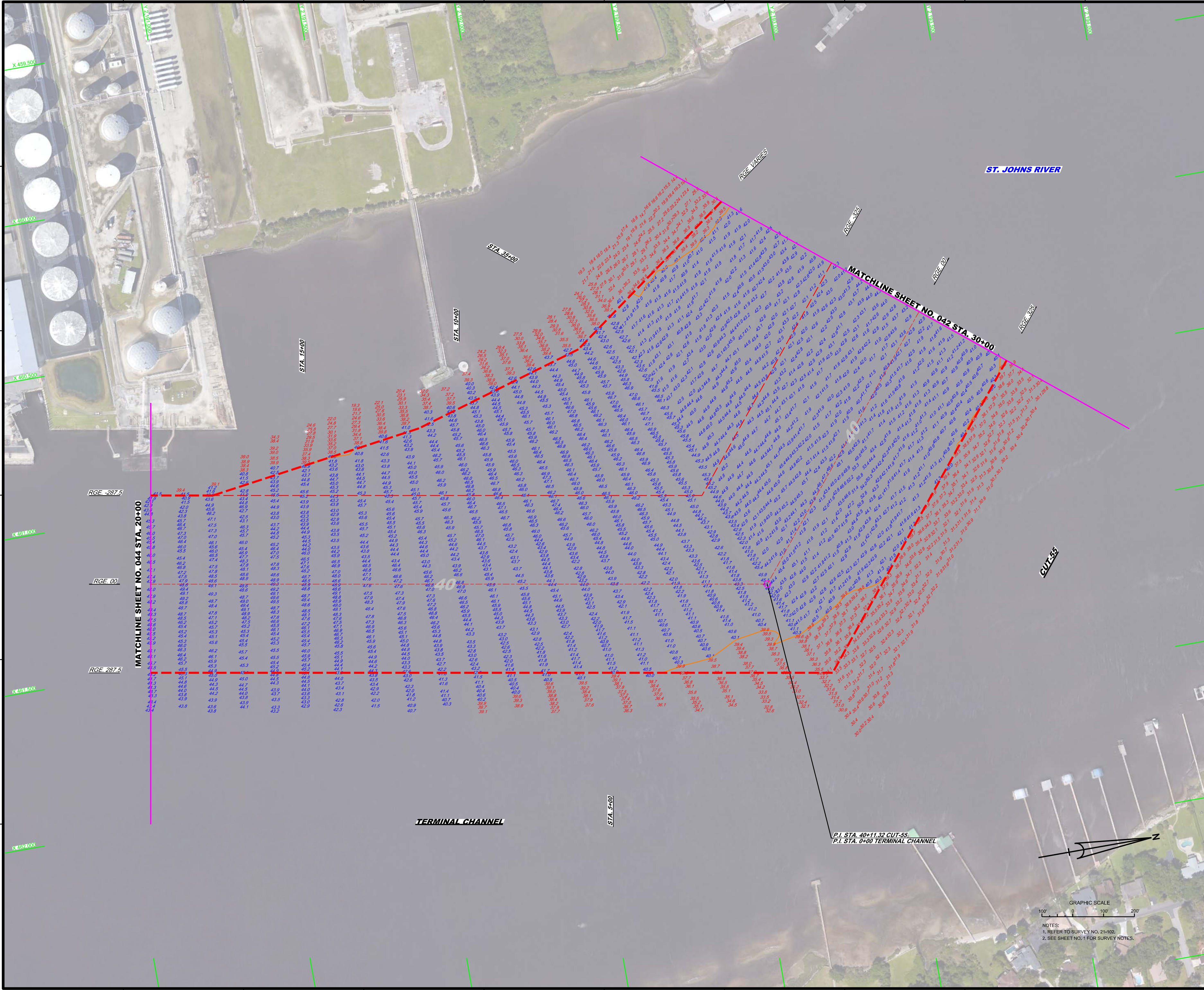
| MAP LABEL | AIDS TO NAVIGATION | PLANE COORDINATES | | LATITUDE | LONGITUDE |
|-----------|--------------------|-------------------|---------|--------------|--------------|
| | | X | Y | | |
| G71 | LT BUOY-71 (1020) | 458482 | 2485932 | 30°22'20.85" | 81°47'39.56" |


GRAPHIC SCALE
 100' 0 100' 200'
 NOTES:
 1. REFER TO SURVEY NO. 21-102.
 2. SEE SHEET NO. 1 FOR SURVEY NOTES.



| | | |
|--|--|--|
| | | US Army Corps of Engineers Jacksonville District |
| SAFETY ON THIS JOB DEPENDS ON YOU | | |
| Checked By: | GHR | |
| Designed By: | WRM DMM/PC WRM | |
| Drawn By: | WRM | |
| File Name: | JANBR / 19RFB / MAR2013 / NA03BHARDSON | |
| Reference File: | Z:\1026-GS-BRD\03 | |
| Print Name: | Z:\1026\HARDSON | |
| Created: | JUN 2021 | |
| JACKSONVILLE HARBOR, FLORIDA | | |
| 2nd QUARTER EXAM SURVEY FY21 30, 34, 38, 40 & 42-FOOT PROJECT | | |
| STA. 10+00 THRU STA. 30+00 CUT-55 | | |
| PLAN | | |
| Scale: | AS SHOWN | |
| Drawing no. | 35 / 42 | |
| SHEET 42 OF 57 | | |

NOTES:
1. REFER TO SURVEY NO. 21-102.
2. SEE SHEET NO. 1 FOR SURVEY NOTES.





US Army Corps
of Engineers
Jacksonville District

**SAFETY ON THIS JOB
DEPENDS ON YOU**

DEPARTMENT OF THE ARMY
JACKSONVILLE DISTRICT, CORPS OF ENGINEERS
JACKSONVILLE, FLORIDA

| | |
|--|--|
| Drawn by: WRM Check by: GHR | Date: JUN 2021 Project: 21-102-000-000 Drawing: 36 / 42 |
|--|--|

**2nd QUARTER EXAM SURVEY FY21
30, 34, 38, 40 & 42-FOOT PROJECT**

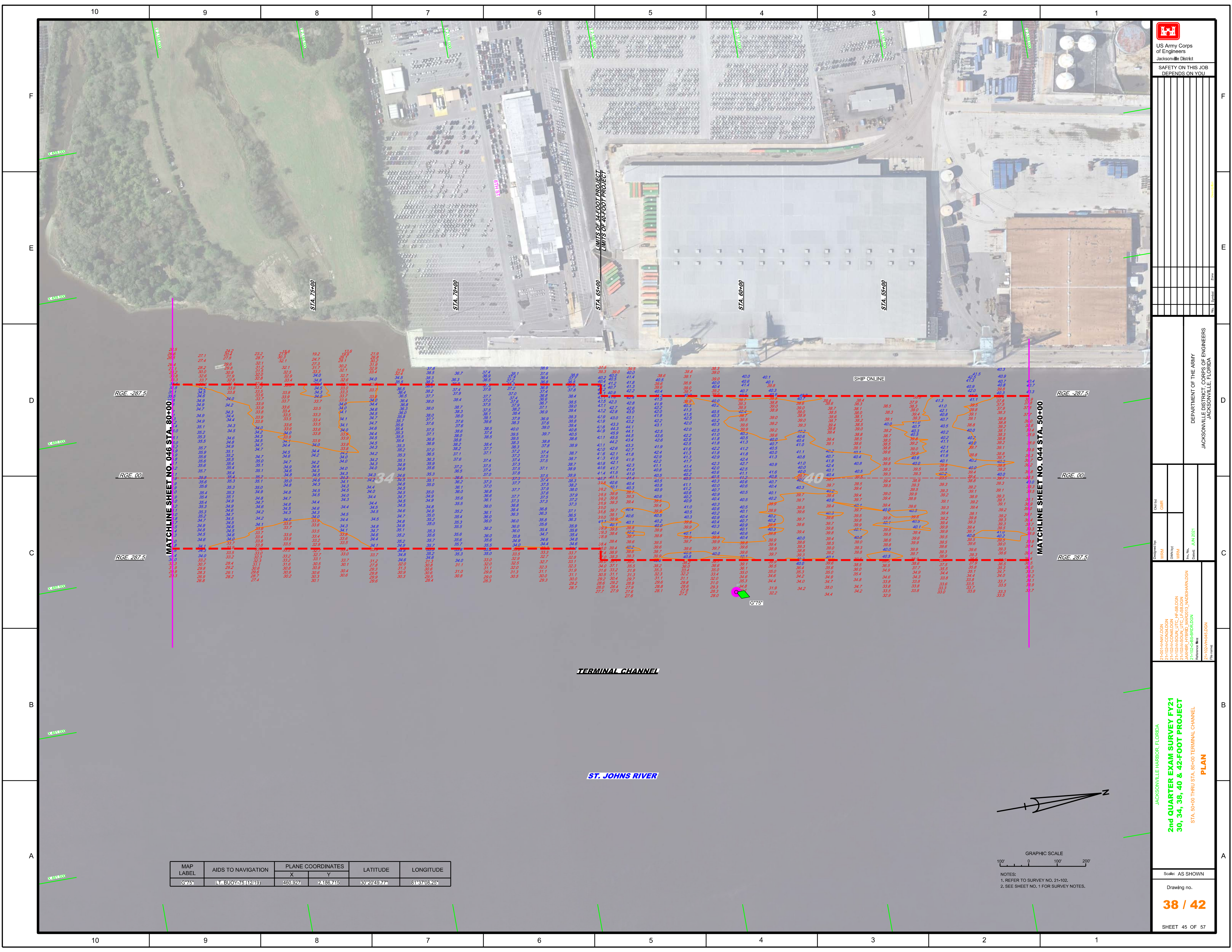
STA. 30+00 CUT-55 THRU STA. 20+00 TERMINAL CHANNEL

PLAN

Scale: AS SHOWN

Drawing no. **36 / 42**

SHEET 43 OF 57



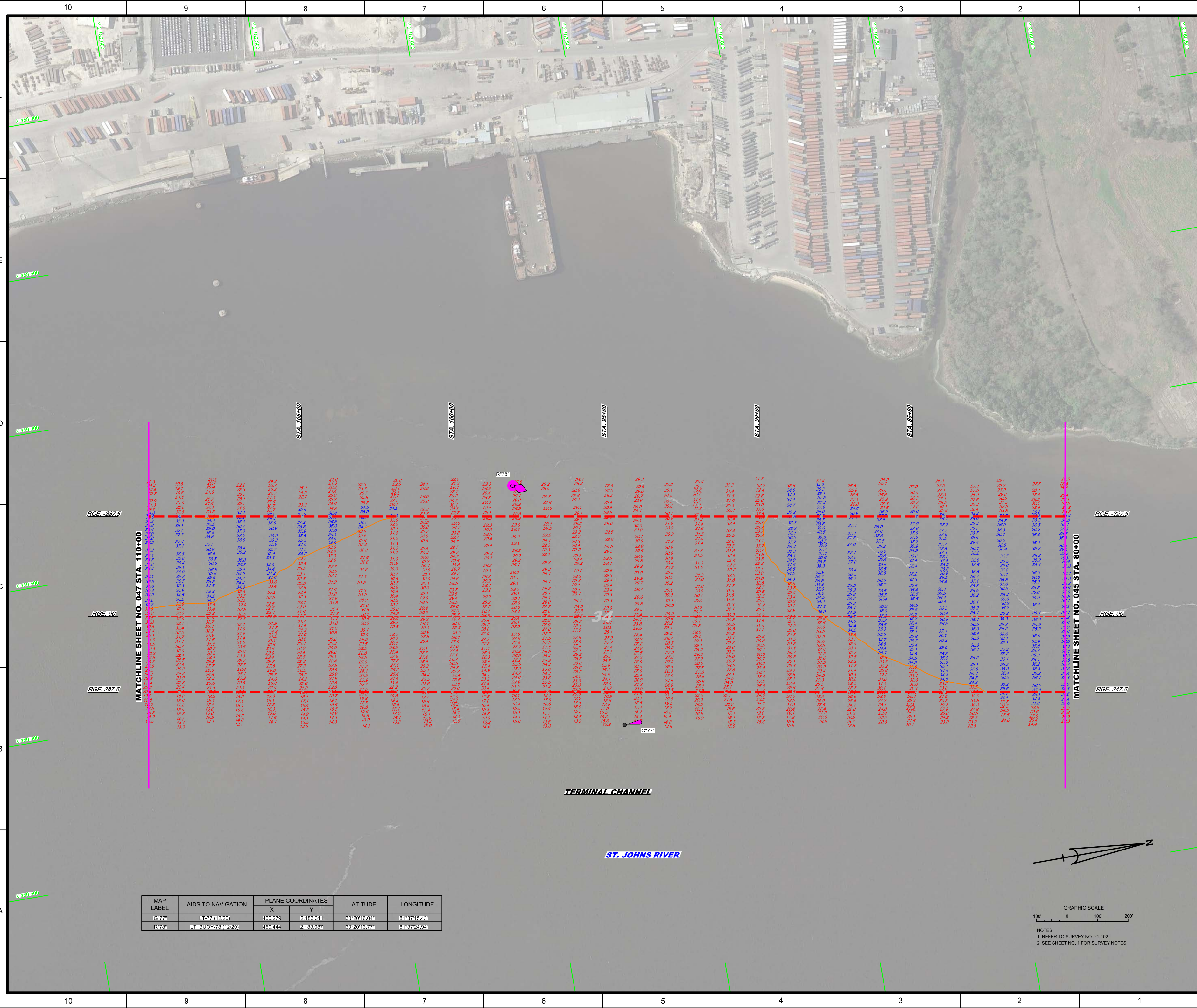
| MAP LABEL | AIDS TO NAVIGATION | PLANE COORDINATES | | LATITUDE | LONGITUDE |
|-----------|--------------------|-------------------|-----------|--------------|--------------|
| | | X | Y | | |
| G75 | Lt. BUOY 75 (1219) | 450,927 | 2,186,715 | 30°20'49.77" | 81°37'08.25" |



NOTES:
1. REFER TO SURVEY NO. 21-102.
2. SEE SHEET NO. 1 FOR SURVEY NOTES.

US Army Corps of Engineers
Jacksonville District
SAFETY ON THIS JOB DEPENDS ON YOU

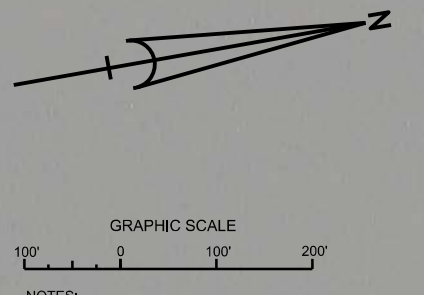
DEPARTMENT OF THE ARMY
 JACKSONVILLE DISTRICT, CORPS OF ENGINEERS
 JACKSONVILLE, FLORIDA



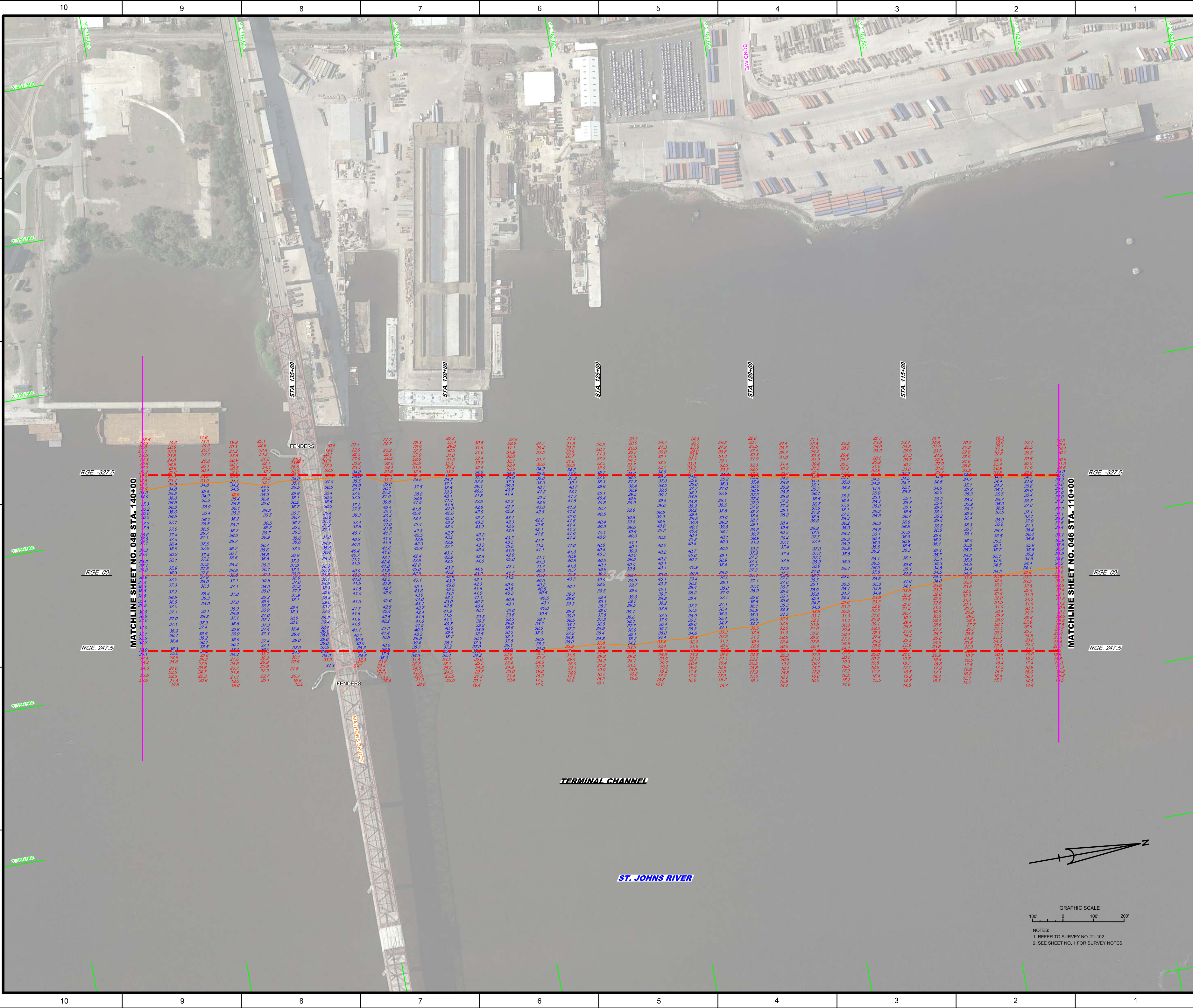
| MAP LABEL | AIDS TO NAVIGATION | PLANE COORDINATES | | LATITUDE | LONGITUDE |
|-----------|--------------------|-------------------|---------|--------------|--------------|
| | | X | Y | | |
| G77# | LT-77 (12/20) | 460279 | 2183311 | 30°20'16.04" | 81°37'15.43" |
| R78# | LT BUOY 78 (12/20) | 459444 | 2183087 | 30°20'13.77" | 81°37'24.94" |


Check By: GHR
 Designed By: WRM
 Drawn By: WRM
 File No: 2-102-GS-BR10L0N
 Date: JUN 2021
 Project: 2nd QUARTER EXAM SURVEY FY21
 SHEET NO. 39 OF 42

JACKSONVILLE HARBOR, FLORIDA
2nd QUARTER EXAM SURVEY FY21
30, 34, 38, 40 & 42-FOOT PROJECT
 STA. 80+00 THRU STA. 110+00 TERMINAL CHANNEL
PLAN
 Scale: AS SHOWN
 Drawing no. **39 / 42**
 SHEET 46 OF 57



NOTES:
 1. REFER TO SURVEY NO. 21-102.
 2. SEE SHEET NO. 1 FOR SURVEY NOTES.





 US Army Corps of Engineers

 Jacksonville District

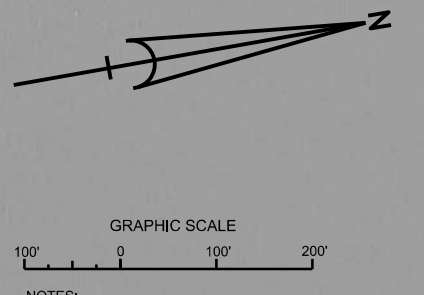
 SAFETY ON THIS JOB

 DEPENDS ON YOU

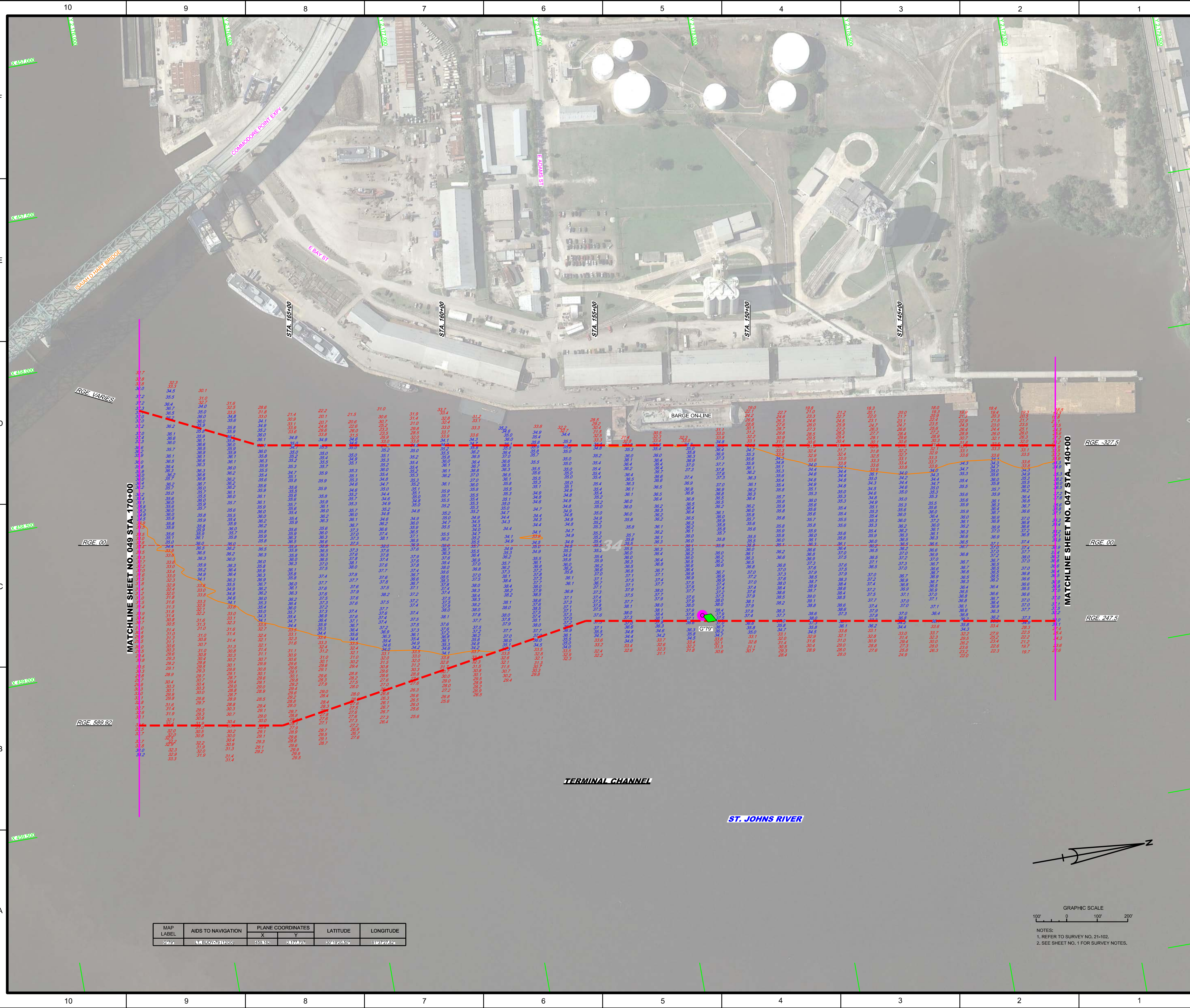
| | |
|--------------|-------------------|
| Checked by: | GHR |
| Designed by: | WRM |
| Drawn by: | WRM |
| File No.: | 2-102-65-BR10-DGN |
| Date: | JUN 2021 |

JACKSONVILLE HARBOR, FLORIDA
2nd QUARTER EXAM SURVEY FY21
30, 34, 38, 40 & 42-FOOT PROJECT
 STA. 110+00 THRU STA. 140+00 TERMINAL CHANNEL
PLAN

Scale: AS SHOWN
 Drawing no.
40 / 42
 SHEET 47 OF 57



NOTES:
 1. REFER TO SURVEY NO. 21-102.
 2. SEE SHEET NO. 1 FOR SURVEY NOTES.

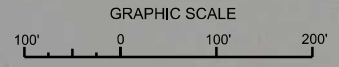


MATCHLINE SHEET NO. 049 STA. 170+00

MATCHLINE SHEET NO. 047 STA. 140+00

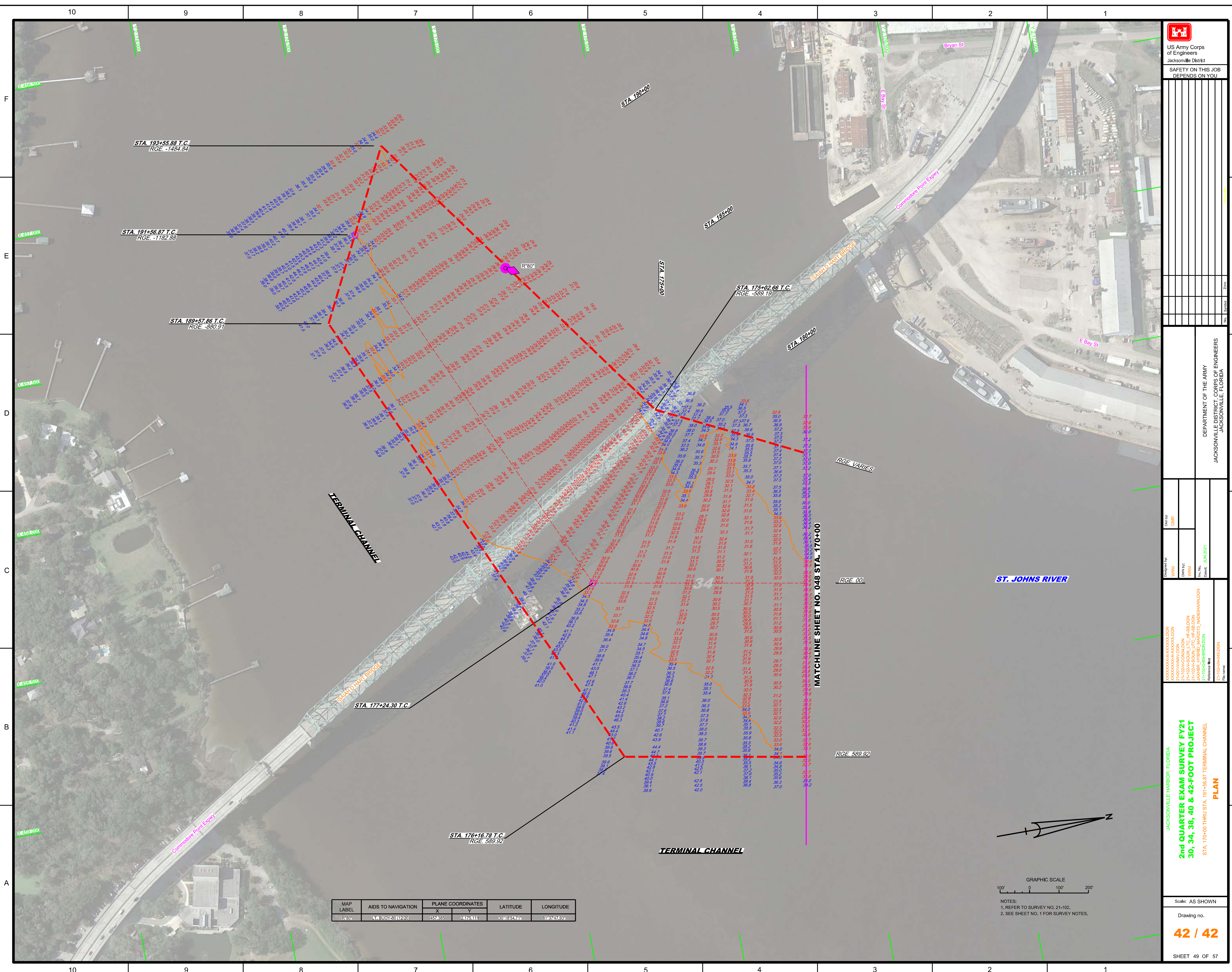
TERMINAL CHANNEL


ST. JOHNS RIVER



NOTES:
1. REFER TO SURVEY NO. 21-102.
2. SEE SHEET NO. 1 FOR SURVEY NOTES.

| MAP LABEL | AIDS TO NAVIGATION | PLANE COORDINATES | | LATITUDE | LONGITUDE |
|-----------|--------------------|-------------------|---------|-----------|-----------|
| | | X | Y | | |
| G79 | 14 BUOY (79) (220) | 459182 | 2417707 | 804620.59 | 318270.24 |




 US Army Corps of Engineers
 Jacksonville District
 SAFETY ON THIS JOB
 DEPENDS ON YOU

DEPARTMENT OF THE ARMY
 JACKSONVILLE DISTRICT, CORPS OF ENGINEERS
 JACKSONVILLE, FLORIDA

Drawn by: GHR
 Checked by: GHR
 Date: JUN 2021

2nd QUARTER EXAM SURVEY FY21
 30, 34, 38, 40 & 42-FOOT PROJECT
 STA. 170+00 THRU STA. 191+56.87 TERMINAL CHANNEL

JACKSONVILLE HARBOR, FLORIDA
PLAN

Scale: AS SHOWN
 Drawing no.
42 / 42
 SHEET 49 OF 57

| MAP LABEL | AIDS TO NAVIGATION | PLANE COORDINATES | | LATITUDE | LONGITUDE |
|-----------|--------------------|-------------------|---------|--------------|--------------|
| | | X | Y | | |
| R-80 | L- BUOY 30 (1220) | 457805 | 2476311 | 30°16'54.94" | 81°07'47.63" |

GRAPHIC SCALE
 0 100' 200'
 NOTES:
 1. REFER TO SURVEY NO. 21-102.
 2. SEE SHEET NO. 1 FOR SURVEY NOTES.